

## Equipment cart



Comprising an aluminium profile frame with two shelves and cable holder on lockable twin casters.

### Technical Specifications:

Dimensions (D x W x H): 440 x 575 x 905 mm  
Load-bearing capacity: max. 25 kg per shelf  
Weight: 4.1 kg

Item No. 700-00-02

## Cable holder for *JETmaster TP*



Retrofit kit, usable on both sides

Item No. 920-11-61

## USB stick

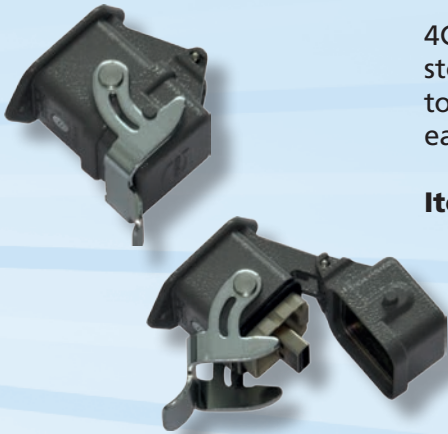


With master key, current software, and operating instructions for *fitron TP* and *JETmaster TP*

Item No. 913-99-01

# ACCESSORIES

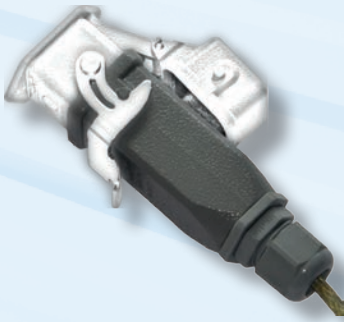
## External USB mould data memory



4GB-USB memory. For attachment to the mould for the storage of all mould data. The mould data is firmly attached to the moulds and therefore automatically available with each control device without the need for adjustment work.

**Item No. 913-05-04**

## USB connecting cable



Connecting cable between external mould data memory and controller.

**Item no.:** 2m 913-06-02  
5m 913-06-05  
10m 913-06-10

**fiege**  
**electronic** GmbH

Fiege electronic GmbH  
Lorscher Straße 12  
D-69469 Weinheim  
Tel.: +49 6201 259 58-0  
Fax: +49 6201 259 58-29  
info@fiege-electronic.de  
www.fiege-electronic.de